

ΔΗΜΟΣΙΟΣ ΔΡΟΜΟΣ



ΕΙΣΟΔΟΣ
ΟΙΚΙΑΣ Γ

ΕΙΣΟΔΟΣ
ΟΙΚΙΑΣ Β

ΕΙΣΟΔΟΣ
ΟΙΚΙΑΣ Α

1225

2131

2375

Γ=916TM

Β=916TM

Α=916TM

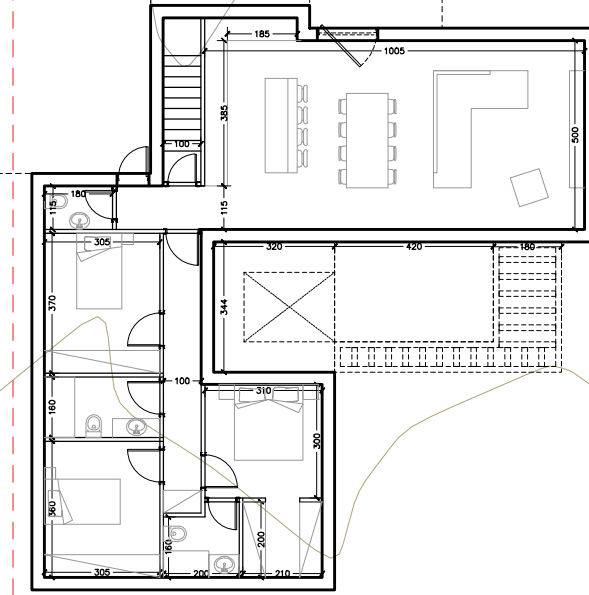
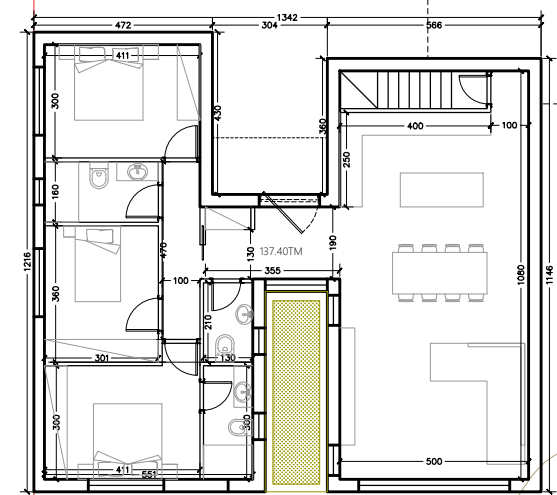
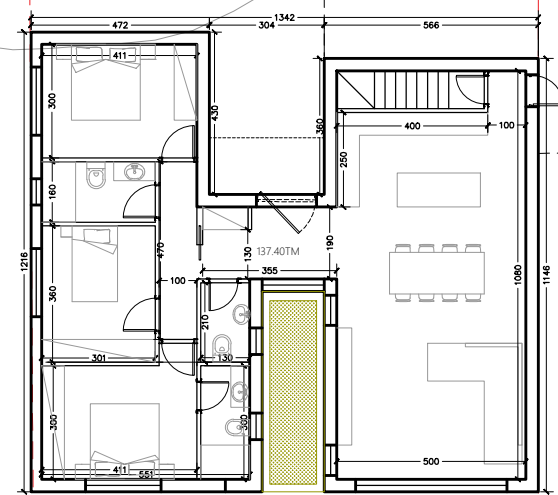
1945

198.0m

198.0m

198.0m

198.0m



35.85m

3
Ε=2748τμ
ΤΕΜ.43

196.0m

197.0m

196.0m

197.0m

196.0m

197.0m

197.0m

197.0m

198.0m